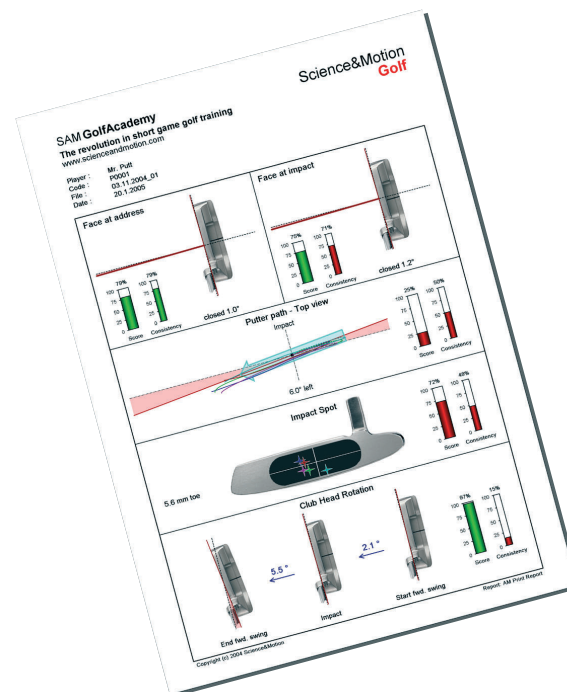


Together with international PGA Tour Pros the scientists of Science&Motion have developed the world wide unique analysis and training system SAM PuttLab.

It gives players a scientifically precise feedback on all relevant parameters of their putting stroke. For the first time SAM PuttLab allows an individual and sensationally efficient putt-training with ascertainable success.

Already today 26 European and American Tour Pros and several European national teams trust the performance of Science&Motion.

Why? Success proves them right.

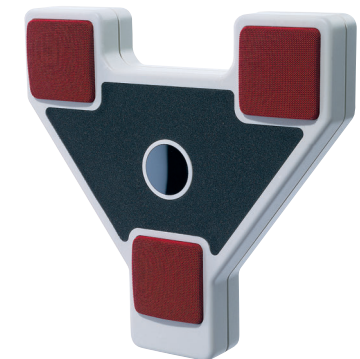


Developed and tested together with international PGA Tour players

The SAM PuttLab analysis and training system is based on an accurate ultrasound measurement. It gives you an individual real time feedback on 28 parameters of your putting stroke e.g. club face alignment at address and impact, club head rotation, swing path direction, impact spot on the club face, swing duration and rhythm.

All results are presented in clear, easy to understand graphical reports. The analysis reveals even the smallest details of the movements. Using the SAM PuttLab training mode you can then tailor individual training strategies and improve specific aspects of your putting. Easy, quick and effective.

- easy-to-use
- automatic measurement and analysis
- evaluation of 28 parameters
- graphical reports for various performance levels
- evaluation of putt technique and movement skills
- training modules to improve specific aspects
- direct online feedback for each stroke
- comparison with performance profiles of PGA Tour players



Immediate control with illustrated reports

the SAM System:

Putt like  
the Tour Pros

## SAM Academy

State of the art  
knowledge for  
trainers and  
Pros

The SAM Academy provides access to the complete knowledge base of Science&Motion. Together with well known top trainers and coaches we offer various seminars and training courses. In the SAM Academies teaching Pros are educated in completely accessing the huge potential of SAM PuttLab. The programme comprises theoretical background information and practical advice such as training modules for different skill levels or the most efficient putting strategies of the PGA Tour Pros.

Research studies conducted together with international partners will feed the SAM Academy with latest knowledge on movement science and putt training.

## SAM YipsCure

Root out the  
trouble

Science&Motion has developed a revolutionary approach to the treatment of the dreaded golfer's cramp. Our own studies prove that occupational dystonia is mainly made up of complex motor strategy problems.

Where avoidance strategies or mental training programs permanently fail, the SAM YipsCure is the first treatment getting right to the heart of the problem. Movement disturbances are measured precisely with the SAM PuttLab.

Then an individual training program is tailored to systematically isolate the movement problems and to "unlearn" them step by step. After the training the original movement competences are regained.

## The advantages of the SAM System

### SAM PuttLab

- developed by scientists and PGA Tour Pros
- easy-to-use structure, plug and play interface for the computer
- complete analysis within 10 minutes
- individual competence profiles
- identifying strengths and weaknesses
- real time feedback in training mode
- exploiting existing potentials
- individualized training
- effective putter-fitting by data support
- independent of the weather conditions
- portable handy suitcase
- suitable for all handicap-groups

### SAM Academy

- teaching state-of the art knowledge and skills by top trainers
- embeds the latest results of science and research
- using successful putting strategies of PGA Tour players

### SAM YipsCure

- based on scientific findings
- comprehensive treatment approach
- root out the trouble; long term treatment effect
- training with SAM PuttLab

## The SAM System - Testimonials

Padraig Harrington (No. 8 in the world rankings) - 24 October 2004 to "The Guardian":

"You can have good weeks putting badly, and vice versa, but this machine is a great help with those things even a coach cannot see".

David Davies (Journalist), The Guardian – 24 October 2004:  
"...its efficacy can be judged by the fact that Padraig Harrington, No. 8 in the world rankings and one of the great putters, has bought one for his practice green at home."

Geoff Mangum (Putting Expert and Instructor):  
"This is the first putting technology worthy of the new century, and should immediately find a place in every top golf school and in every professional player's arsenal."

Federic Dassu (Head-Coach for the Italian women's golf Federation) wrote:  
"The machine is well accepted by the players...some are totally enthusiastic about it!"

Travis Fussell, President Fussell Putters, Inc:

"From amateurs to tour players, I am amazed how easy it is to pinpoint problems in ones putting stroke. From a simple assessment to teaching, nothing comes close to the accuracy and consistency that your machine displays. I have been able to modify and sell hundreds of putters utilizing your SAM system."

Hank Haney (in Golf Digest Magazine):  
"A team of german scientists and teaching professionals figured that the only way to cure the yips was to first discover exactly when, how and how much they happen in a stroke. That's what their SAM machine does."

Science&Motion  
Golf 

**Science&Motion Sports GmbH**

Phone: +49 (0) 6131 906 4440

Email: sales@scienceandmotion.com

Internet: www.scienceandmotion.com