

## 2 What's new in PuttLab 2008

PuttLab version 2008 includes a lot of new features. The main differences to the previous version 2.0 are listed in this chapter to give a quick overview.

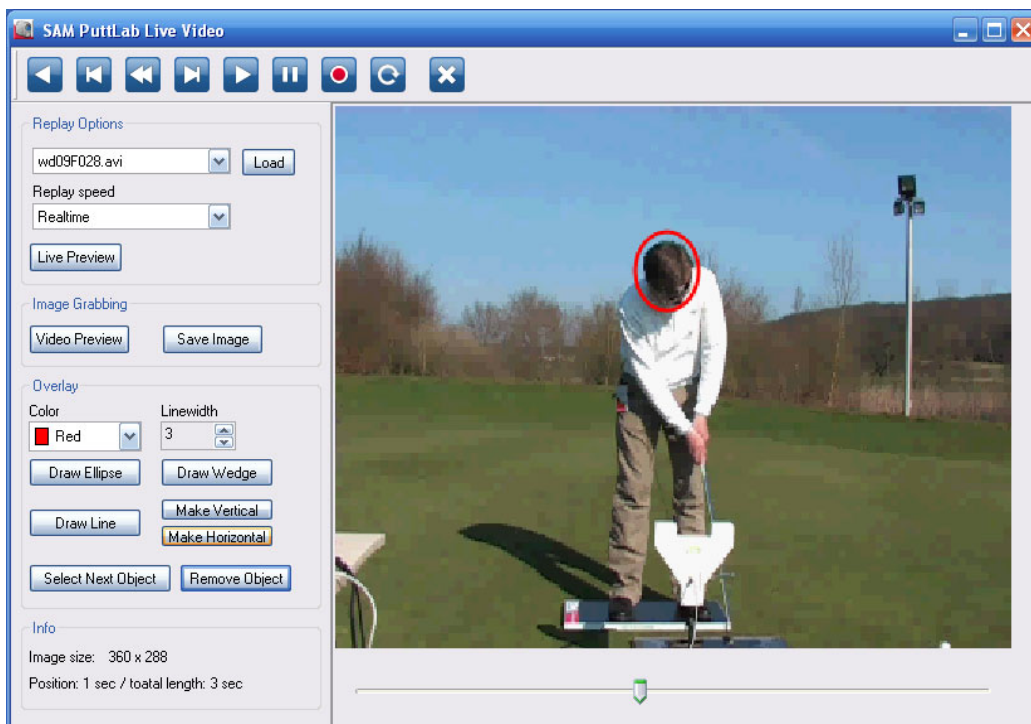
All the new features are described in detail in this manual. Just follow the links in this overview to jump to the detailed descriptions.

### 2.1 Video module

PuttLab 2008 includes a Video Module for capturing video clips parallel to the putt recordings. You can use any Windows compatible camera like DV cameras (Firewire) and USB cameras (also Webcams). Also special cameras that come with a WDM Windows driver can be used.

The video module includes the following features:

- Automatic recording of video clips of all recorded putts (one video per putt will be automatically captured and saved together with the PuttLab data)
- Easy replay of the recorded videos, also directly from the report view
- Manual recording and disk storage of video clips
- Replay of video clips (AVI, WMV, MPEG)
- Saving snapshots as image files out of live video or replay video
- Different replay options like slow motion or single Step navigation
- Overlay drawing functions for lines, circles and wedges for angle measurement. Works in live recording and replay mode!



Screenshot of PuttLab 2008 Video Module

To learn all the details on the Video Module go to [4.8](#)

## 2.2 Media File Attachment

The "Media File Attachment" feature allows to add and archive any media or document files to your putt data easily. The different types of files will be detected automatically and can be opened just by clicking with the mouse.

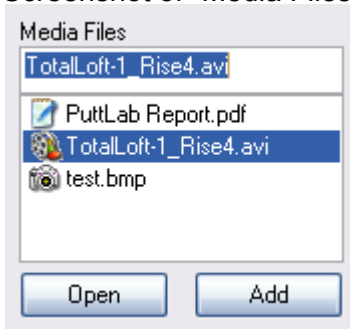
The files can be:

- Video files (avi, wmv, mpeg etc.)
- Audio files (wav, mp3)
- Pictures (jpg, bmp, etc.)
- Documents (pdf, doc, txt)

### Example how to use the feature:

- Easily add text comments or pictures to your training sessions This will be a great help remembering players and situations when you look up the data later in the future.
- Add videos for each putt and also get information on body movement together with the PuttLab recorded data.

Screenshot of "Media Files" section:



- Data type is shown by symbols
- Open any file by double-clicking
- Add files to the list by "drag and drop"
- Add as many files as you like for one session

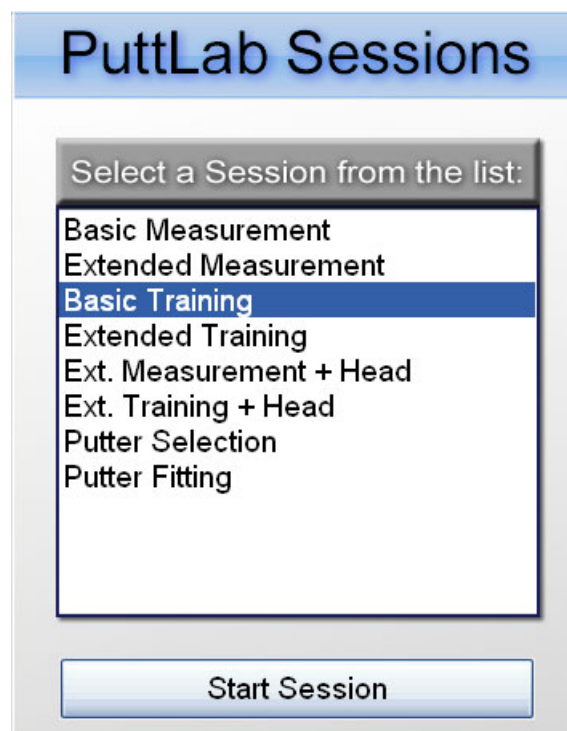
## 2.3 Predefined Putting Sessions

PuttLab 2008 includes eight predefined putting sessions. These sessions cover different usage cases of SAM PuttLab, for example training, analysis, putter selection or putter fitting.

The advantage of the sessions is that they guide the user through the process, from data input to the result presentation in the reports.

It is also possible to add user specific sessions later to the program, for example a special training with report screens that are not available in the standard program.

All the details on the predefined sessions you can find in [4.8](#).



## 2.4 Audio Feedback module in training mode

Training now with additional audio feedback.

In PuttLab 2008 the result output for the putts can also be an acoustic feedback for the most important training parameters

### Example:

Training parameter is club face alignment at impact.

After the putt you either hear:

- "left" – the club face angle exceeds the given limit to the left
- "right" – the club face angle exceeds the given limit to the right
- "good" - the club face angle is inside the given limit

The sounds (sound files in wav format) and the limits are selectable for each parameter.

Advantages:

- training with direct feedback without having to look to a computer screen
- training of two parameters in parallel, one with visual feedback, one with acoustic feedback
- clear feedback, no distraction by having to read numbers or graphs on the screen

More details on the Audio Feedback module you can find in [4.6.3](#).

## 2.5 Individual report logos

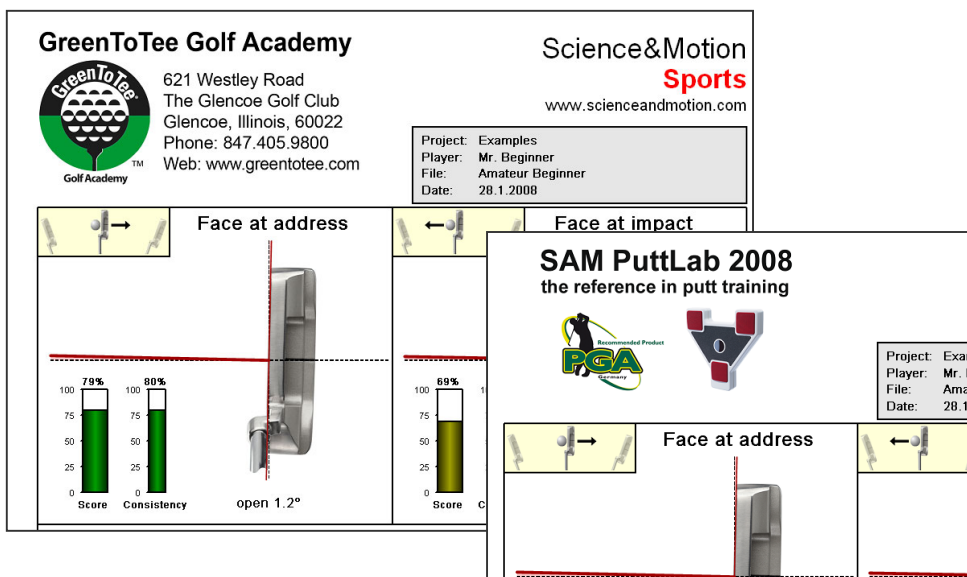
PuttLab 2008 allows to change the header graphics of the print report easily.

Use the PuttLab for your personal advertising or as marketing tool for sponsoring!

The left portion of this header can be replaced by any individual logo graphics:

- use your own logo or the club logo
- use a company logo for corporate events
- add as many logos you like and select one for the actual printout

### Examples:



All details on the individual report logos you can find in [4.11.5](#).

## 2.6 Direct emailing of PDF reports

PuttLab 2008 allows to directly send print reports as PDF by email.

This feature will use an installed email client software like Outlook or Thunderbird to generate a complete email with the PDF report as attachment.

It is even possible to define the email text including the name of the player.

All details on the direct report emailing you find in [4.11.2](#)

## 2.7 Putter Selection module

The *Putter Selection Module* is one of the predefined putting sessions. The ideal tool for selling putters!

The putter selection process will automatically ask for all the data needed including data of the putter like loft, shaft angle and lie angle.

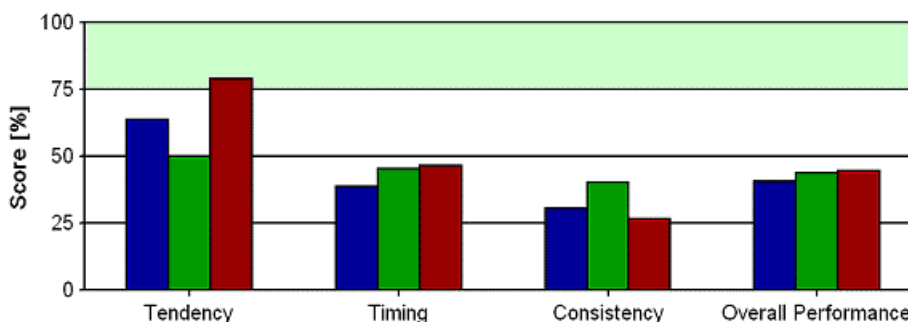
In the process up to 8 putters can directly being compared and the results will be shown in the new designed "Putter Selection Report":

### Putter Selection Report

Project: Project 1		Player: Putter Selection		
Color	File / Putter	Loft (°)	Lie (°)	Shaft (inches)
<span style="color: blue;">■</span>	Putter 1	3.0	71	34
<span style="color: green;">■</span>	Putter 2	3.0	71	34
<span style="color: red;">■</span>	Putter 3	3.0	71	34

Summary:

Record	Tendency	Timing	Consistency	Overall Rating
<span style="color: blue;">■</span>	63.5%	38.4%	30.4%	40.7%
<span style="color: green;">■</span>	49.9%	45.1%	39.9%	43.7%
<span style="color: red;">■</span>	78.7%	46.2%	26.6%	44.5%



The report shows all the overview data on the first page and the details on the following pages. So the putter selection process will be very much simplified and the customer gets a high quality printout with all the relevant and easy to understand information.

The "Overall Rating" number will directly show the putter with the best over all performance for the actual player!

## 2.8 Improved report graphics and parameters

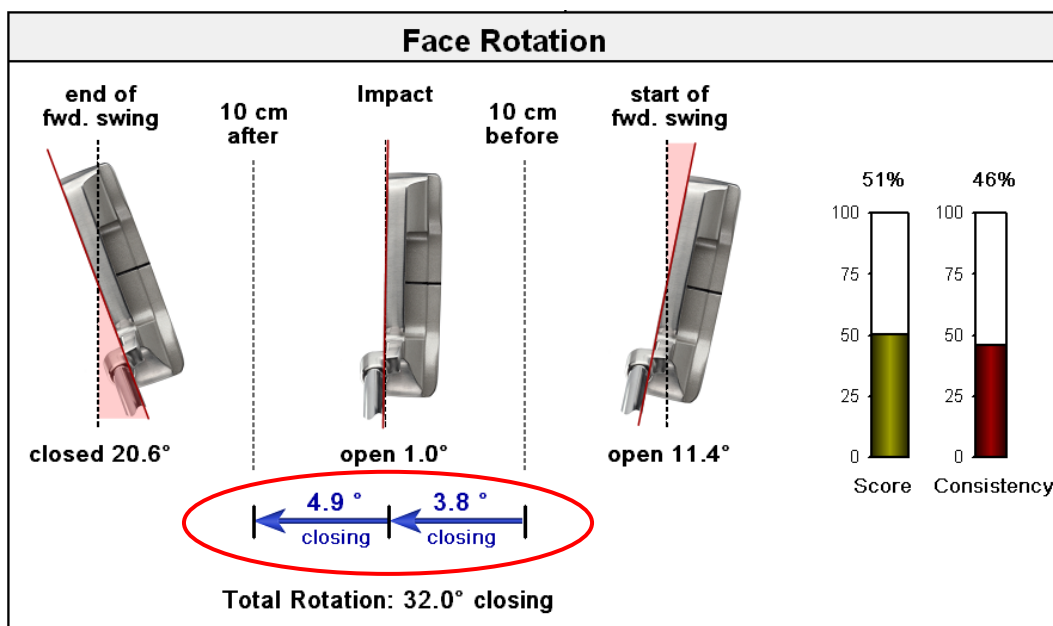
All reports are optimised in PuttLab 2008.

The one page "Amateur" report is replaced by the 2-page "Basic" report now and the 5-page "Pro" report is replaced by the 6-page "Extended" report now.

Please see the "PuttLab Reports Manual" PDF for details.

### The most important changes and improvements:

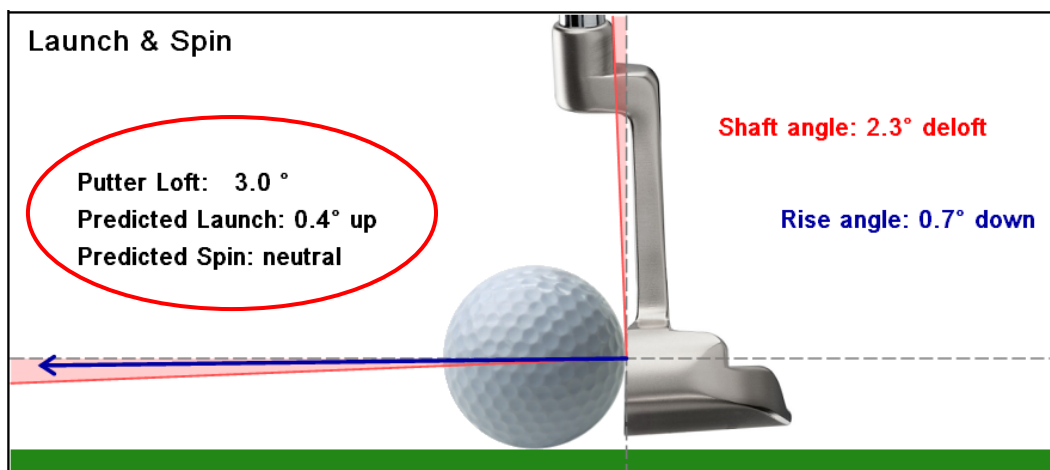
- Optimised design for rotation graphs:



The most important area in regards to the rotation is the area of 20 cm or 8 inches around the impact point (ball position). The graphical output is more focussed on this area now, the number for the total rotation is still available as text output.

This change makes it easier to compare players with different lengths of their putting stroke, as the rotation around the impact should not be affected by the length of the stroke.

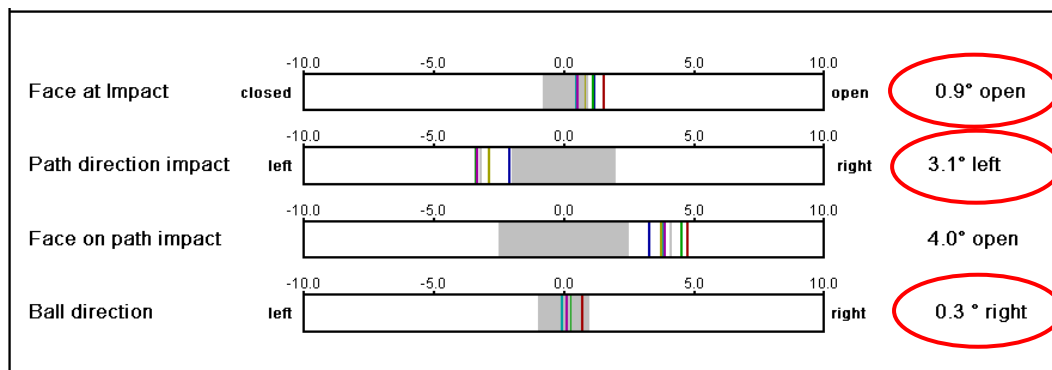
- Calculation of predicted ball spin and launch



If the loft of the putter has been entered in the player data the software is able to calculate the predicted ball spin and launch angle.  
If no data for the putter loft is available the program uses the default value of 3 degrees loft for the calculations.

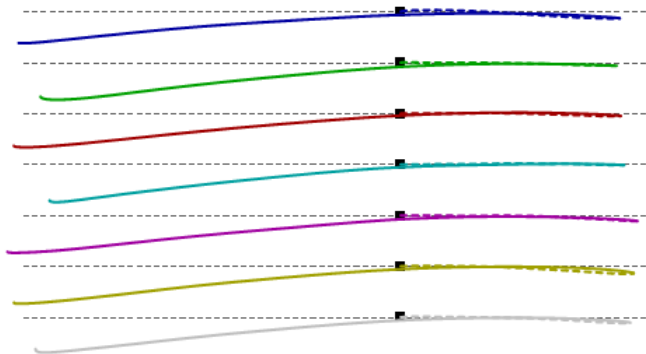
- Calculation of predicted ball direction

This new parameter is important for players having a compensation in their club alignment and path direction. For example a 1 degree open clubface at impact can be completely compensated by a 4 degree "outside in" direction:



So not ideal results for alignment and direction can still lead to a very good performance in ball direction if the player can repeat this strategy very consistently.

- Display of target lines for path and side-view graphics



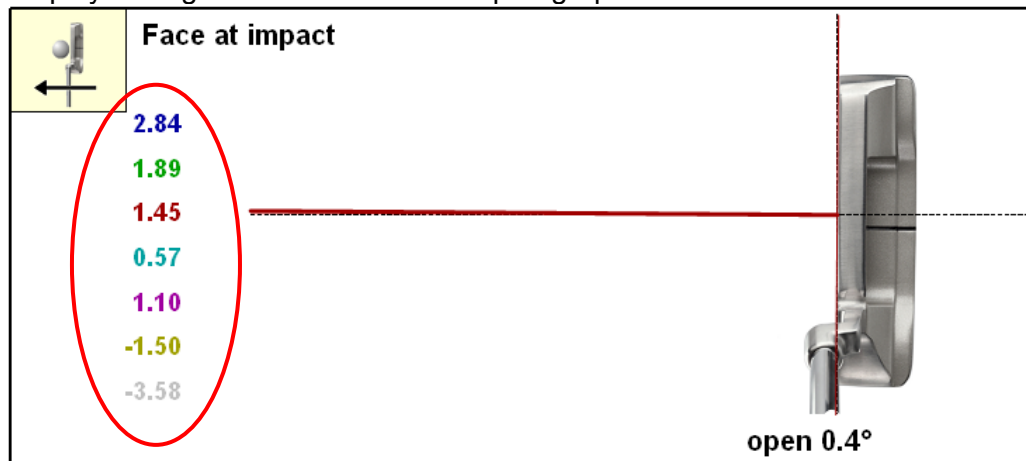
The lines will allow to better see if the path is off to left or right compared to the target line.

- Display of additional player details and "Overall Rating" also on the first page of the Extended Report:

SAM PuttLab Extended Reports			
<b>Project</b>		<b>Session</b>	
Name:	Examples	Name:	Consistent putting stroke
Description:	Example Project	Description:	Consistent putting stroke
		Date:	16.10.2006
<b>Player</b>		<b>File</b>	
Name:	Mr. Consistent	Name:	Consistent putting stroke
Born:	-	Description:	
Hand:	right	Date:	28.1.2008
Handicap:	-	Putts:	7
Playing since:	-		
<b>Technique</b>		<b>Overall Rating</b>	
73.7%		82.6%	
<b>Timing</b>		<b>Consistency</b>	
85.9%		85.4%	

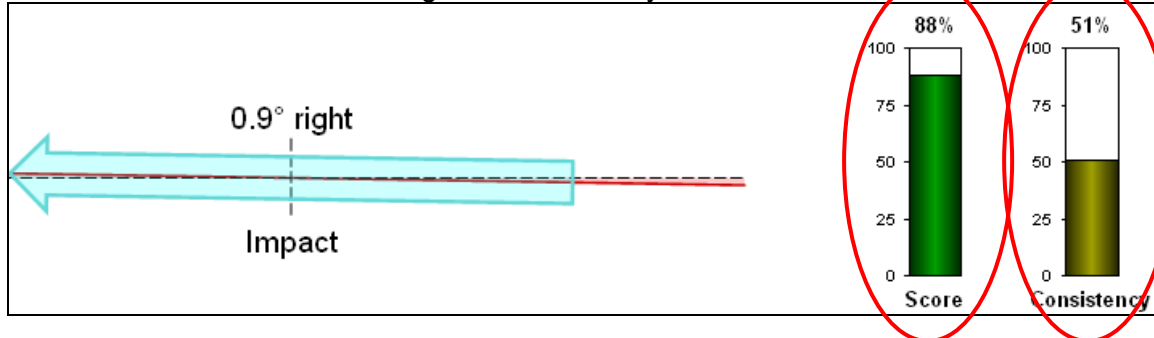
This will allow easy quick-comparison of the actual performance to sessions from the past.

- Display of single data values in the report graphs



This allows to see the variance and the sequence of the putt strokes. The display can be shown or hidden by using the "F7" key.

- Show or hide the bars for "Rating" or "Consistency"



Show or hide the "Score" bar by pressing the "F5" key.  
 Show or hide the "Consistency" bar by pressing the "F6" key.  
 This works for Screen and Print reports.

## **2.9 Usage of multiple PuttLab systems with one software installation**

PuttLab 2008 allows the usage of up to 4 PuttLab systems with one software installation.

In the past this was a limitation for users or locations with multiple PuttLabs. If somebody tried to use a PuttLab system that is not registered on his actual software the program asked for a registration of a new software key. If the key is not available the system won't work.

In future this problem can be easily avoided by adding all available PuttLab software keys to all computers to be used. Then you can easily switch from one registration to another and mixed usage of different PuttLab hardware is not a problem any more.

All details on the registration you find in [4.2](#)